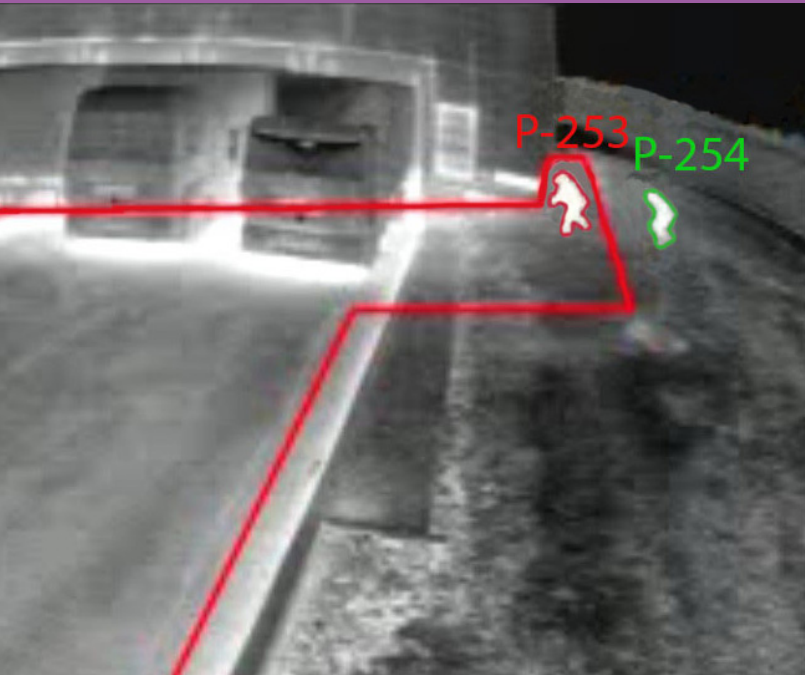


A simple and powerful solution for intrusion detection



ADVANTAGES

- Plug and play detection solution
- Fully guided web set-up
- Detection range superseding embedding analytics by 50%+
- Compatible with all ONVIF cameras (visible and thermal)
- Automatic filtering of climatic perturbations (light changes, clouds, rain, snow, vegetation)
- System resistant to difficult conditions (fog, hidden individuals, camera vibrations)
- Integrated alarm check web interface
- Direct integration towards supervisors and remote monitoring stations



APPLICATIONS

- Perimeter protection
- Forbidden presence detection
- Area monitoring
- Loitering detection
- ...



A simple and powerful solution for intrusion detection



FEATURES

- 4 channels box (other versions : contact us)
- 100% configurable with integrated web server
- Automatic monitoring of the cameras and box status (« watchdog » alarms)
- Consumption 15W / 35W (depending on number of channels)
- Optional dry contacts module : 2 inputs / 3 outputs (USB) or 6 inputs / 6 outputs (Ethernet driven)
- Connections : HDMI, DisplayPort, Ethernet 1 Gbit/s, 4 x USB 3.0, 1 x USB 2.0, Audio

